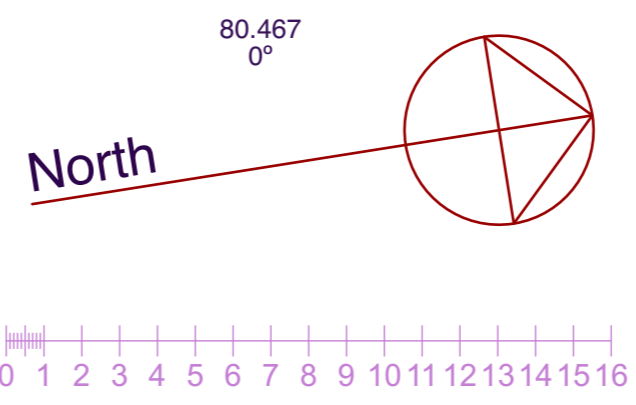


Amenities investigation
liaise with Council re numbers & configuration
Option a & b shown

Tenure issues - increase licence period to maximum acceptable by Council and State in line with capital investment in infrastructure including three year lead-time to enable certainty for a commercial operator. The Friends of the Caloundra Lighthouse currently have a three year lease of the buildings from Council and would sublease the coffee & cakes operation

The object is to activate the precinct for tourism and educational-uses to the maximum acceptable without compromising heritage significance

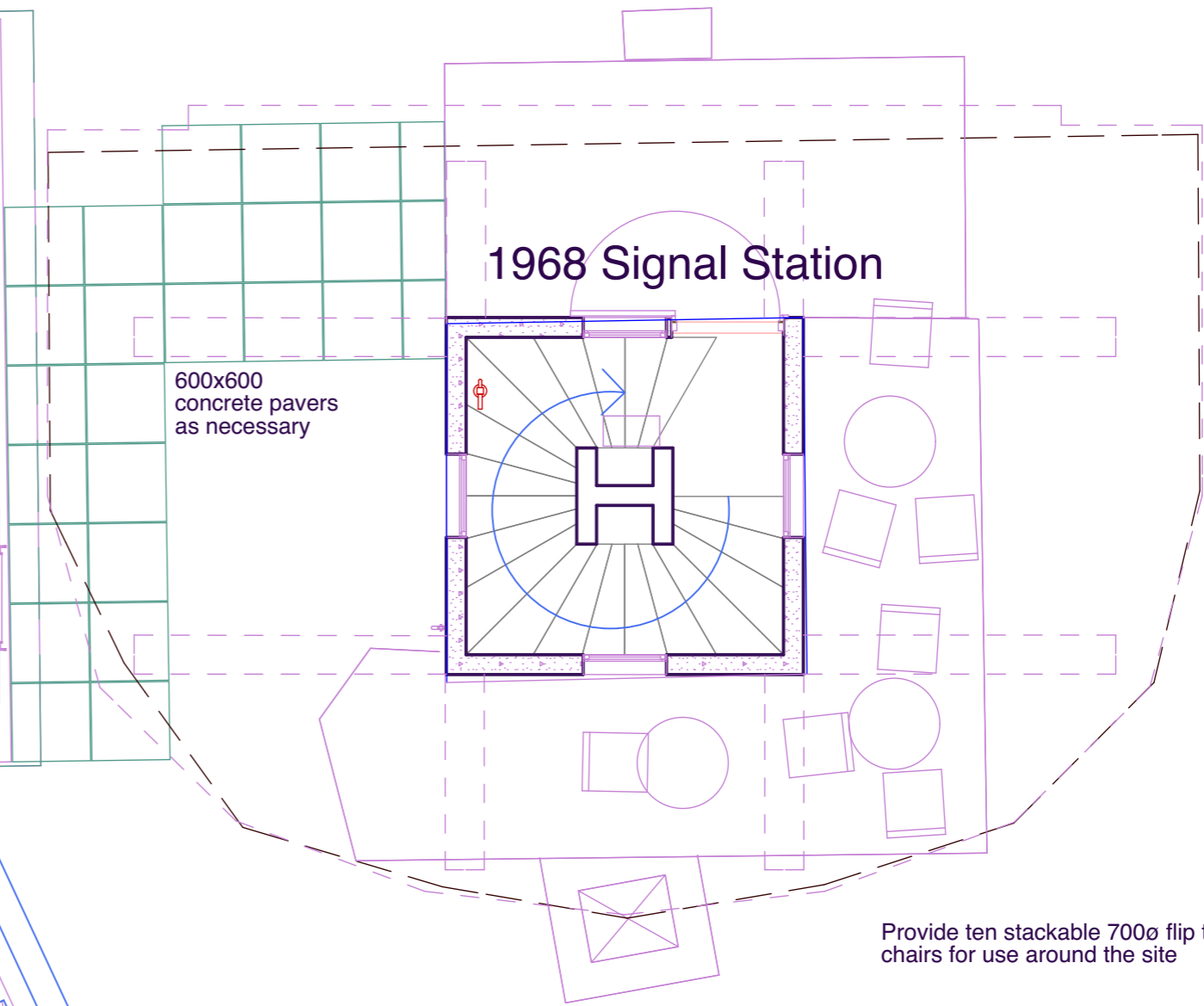
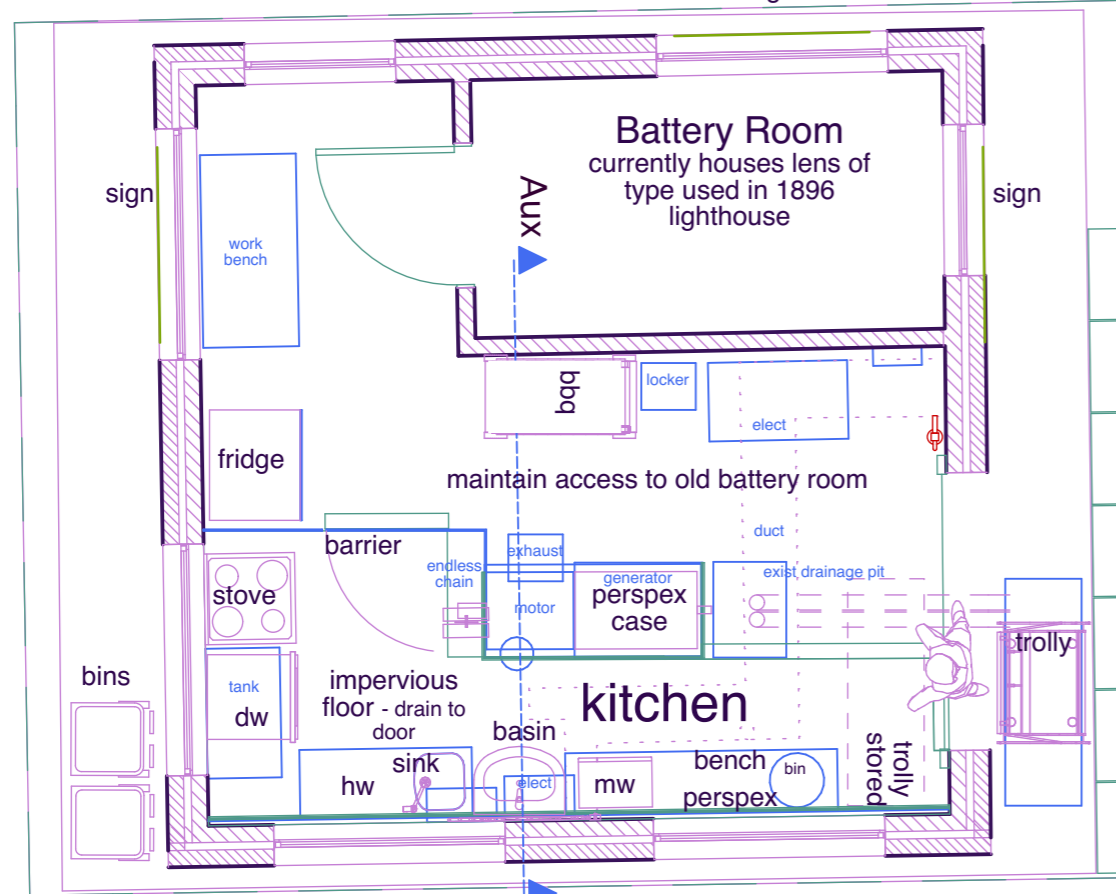
8 Campbell St Moffat Beach Q 4551
ROGERT TODD ARCHITECT
 www.rogertoddarchitect.com.au
 phone/fax: 5491 7654 mobile 0403 107654
 toddarch@powerup.com.au



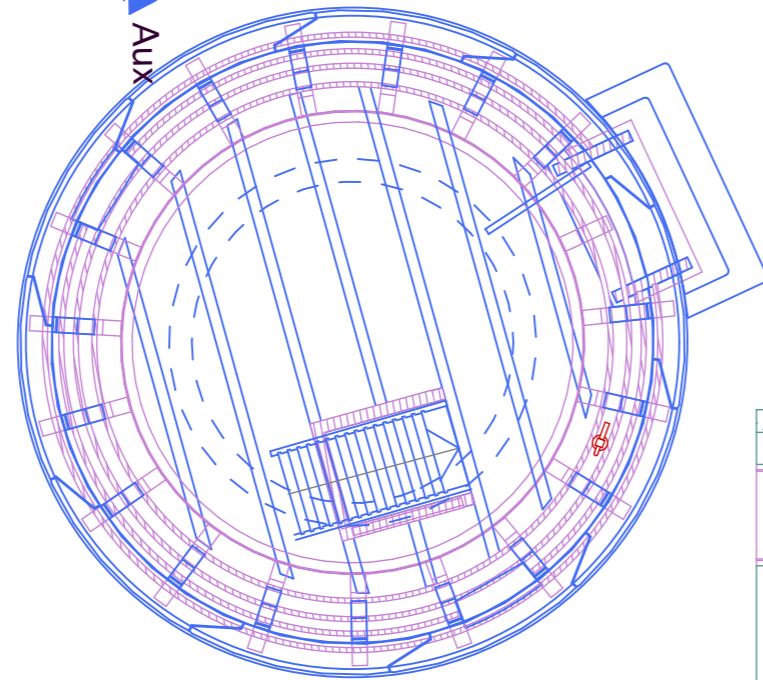
this management plan has been funded by a grant from Council

Caloundra Lighthouses Conservation Management Plan Site Plan

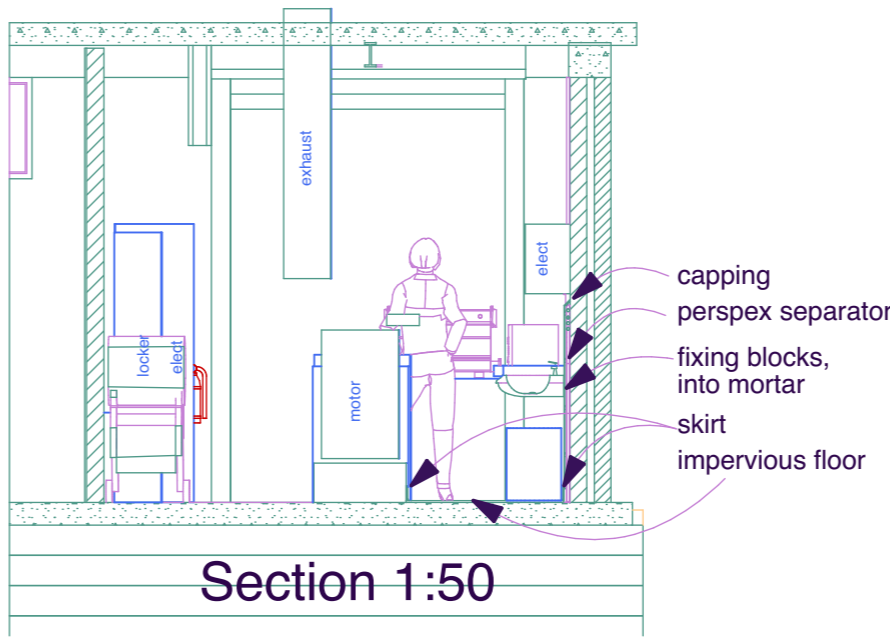
Auxiliaries Building



Provide ten stackable 700ø flip top tables & chairs for use around the site

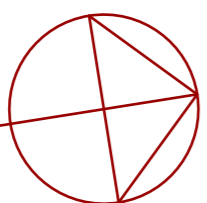


1896 Lighthouse



Section 1:50

North



8 Campbell St Moffat Beach Q 4551
www.roger todd architect.com.au
R O G E R
A R C H I T E C T
T O D D
 phone/fax: 5491 7654 mobile 0403 107654
 toddarch@powerup.com.au

Caloundra Lighthouses Coffee Area - Ground Floor